

IP/MPLS Routers

VCL-MX-5010-R: MPLS Router (Edge / Access)

- 4 x 10/100/1000BaseT RJ-45 • 8 x 10/100/1000BaseT RJ-45 / 1G Optical (SFP) interfaces
- 2 x 10/100BaseT RJ-45 • 1 x RS-232 • 1 x GE RJ45 Secure Management Port
- 1+1 power supply options.

Throughput:

Router :	23.5 Gbps
IPsec :	3.8 Gbps
MPLS :	20.7 Gbps



VCL-MX-5020-R: MPLS Router (Access)

- 5 x 10/100/1000BaseT RJ-45 • 2 x 10/100BaseT RJ-45 • 1 x RS-232
- 1 x GE RJ45 Secure Management Port • 1+1 power supply options.

Throughput:

Router :	9.9 Gbps
IPsec :	3.8 Gbps
MPLS :	8.7 Gbps



VCL-MX-5040-R: MPLS Router (Core / Edge)

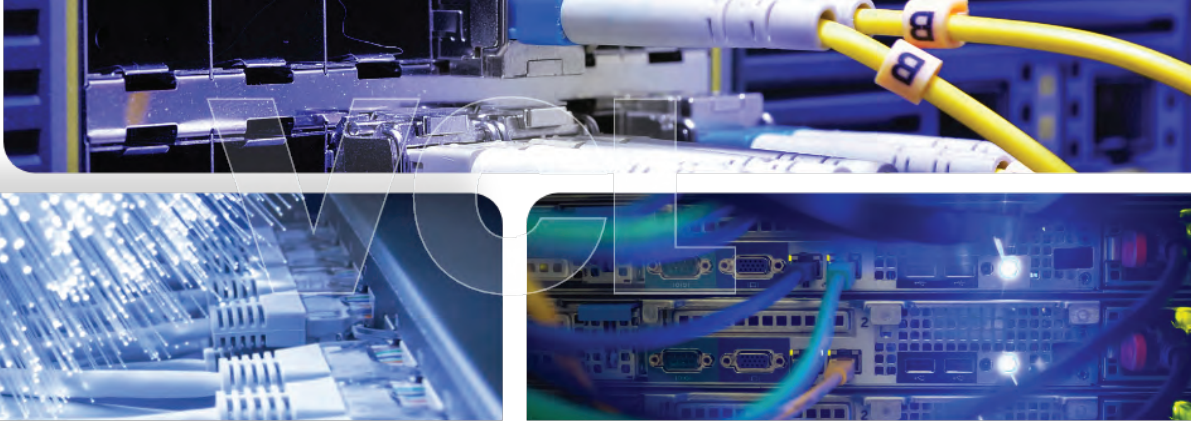
- 40 x 1G/10G ports that can be used in any combination.
- May be configured as 1G 10/100/1000BaseT RJ-45 / 1G Optical (SFP) interfaces / 10G (SFP+) Fiber Optic ports in any combinations
- 2 x USB ports • 1+1 power supply options.

Throughput:

Router :	344.8 Gbps
IPsec :	264.1 Gbps
MPLS :	310.6 Gbps



MPLS Routers



VALCOMM

Interfaces	IP/MPLS Routers		
	VCL-MX-5010-R (Edge / Access)	VCL-MX-5020-R (Access)	VCL-MX-5040-R (Core / Edge)
RJ-45 (10/100BaseT)	2	2	0
RJ-45 (10/100/1000BaseT)	4	5	(4/8/16)
1G Optical (SFP)	8	0	(4/8/16)
10Gbps (SFP+) Fiber ports	0	0	(4/8/16)
RS-232	1	1	0
USB	0	0	2
Throughput	23.5 Gbps	9.9 Gbps	344.8 Gbps
Power Options	Redundant Power AC & DC	Redundant Power AC & DC	Redundant AC
Power Consumption	< 30W @48V DC < 34W @80~240, 50/60Hz V AC	<28W @48V DC <30W @80~240, 50/60Hz V AC	600W
Operating Temperature	-4°F ~ 149°F (-20°C ~ 55°C)	-4°F ~ 149°F (-20°C ~ 55°C)	32°F ~ 122°F (0°C ~ 50°C)
Storage Temperature	-40°F ~ 185°F (-40°C ~ 85°C)	-40°F ~ 185°F (-40°C ~ 85°C)	-22°F ~ 167°F (-30°C ~ 75°C)
Operating Humidity	10%~95% relative humidity, non-condensing	10%~95% relative humidity, non-condensing	10%~95% relative humidity, non-condensing
Storage Humidity	10%~95% @40°C; non-condensing	10%~95% @40°C; non-condensing	10%~95% @40°C; non-condensing
Routing features			
Routing	Static IPv4 routing, Static IPv6 routing, Inter-VLAN based routing	Static IPv4 routing, Static IPv6 routing, Inter-VLAN based routing	Static IPv4 routing, Static IPv6 routing, Inter-VLAN based routing
Protocols	RIPv1, RIPv2, BGPv4, IS-IS, OSPFv2, OSPFv3, RSVP(MPLS-TE)	RIPv1, RIPv2, BGPv4, IS-IS, OSPFv2, OSPFv3, RSVP(MPLS-TE)	RIPv1, RIPv2, BGPv4, IS-IS, OSPFv2, OSPFv3, RSVP(MPLS-TE)
Redundancy Protocols	VRRP	VRRP	VRRP
MPLS	Dynamic (LDP) and static	Dynamic (LDP) and static	Dynamic (LDP) and static
Features	Supports 802.1Q VLAN	Supports 802.1Q VLAN	Supports 802.1Q VLAN
	IPv4 & IPv6	IPv4 & IPv6	IPv4 & IPv6
	System access authentication via RADIUS	System access authentication via RADIUS	System access authentication via RADIUS
	Detailed system logging	Detailed system logging	Detailed system logging
	LLDP, NTP, PPPoE, STP, SNMP, NAT, BFD	LLDP, NTP, PPPoE, STP, SNMP, NAT, BFD	LLDP, NTP, PPPoE, STP, SNMP, NAT, BFD
	Q-in-Q	Q-in-Q	Q-in-Q
	DHCPv4 and DHCPv6	DHCPv4 and DHCPv6	DHCPv4 and DHCPv6
	6in4 (SIT), IPIP, IPIP6, IP6IP6	6in4 (SIT), IPIP, IPIP6, IP6IP6	6in4 (SIT), IPIP, IPIP6, IP6IP6
IP Forwarding, ARP	IP Forwarding, ARP	IP Forwarding, ARP	
Security Firewall Features			
Features	Policy Based Routing	Policy Based Routing	Policy Based Routing
	Rule Based Firewall with IP	Rule Based Firewall with IP	Rule Based Firewall with IP
	Zone based firewall for Layer 2/3	Zone based firewall for Layer 2/3	Zone based firewall for Layer 2/3 Security
	IPsec Site-to-Site Tunnels, GRE	IPsec Site-to-Site Tunnels, GRE	IPsec Site-to-Site Tunnels, GRE
	Access lists	Access lists	Access lists
	Per Frame/Per packet authentication	Per Frame/Per packet authentication	Per Frame/Per packet authentication
	Whitelist and Blacklist Options	Whitelist and Blacklist Options	Whitelist and Blacklist Options
	VPN	VPN	VPN
Technical Specifications			
Integrated Storage Drive	16GB High Performance SATA Drive	16GB High Performance SATA Drive	Internal, Onboard 500GB Performance SATA Drive
Additional Storage Options	M.2 SATA-256GB, 512GB, 1TB SSD	M.2 SATA-256GB, 512GB, 1TB SSD	Optional - 120GB, 240GB, 500GB and 1TB SSD
Power Supply	Dual (1+1) Redundant Power Supply Options (AC/DC)	Dual (1+1) Redundant Power Supply Options (AC/DC)	Dual (1+1) Redundant Power Supply Options (AC)
Processor	Quad Core at 2.4GHz	Dual Core at 1.6GHz	12 Cores or higher at 2.4GHz
DDR RAM	4GB	4GB	16/32GB

© Copyright. All Rights Reserved.

Revision 1.4 November 26, 2021

U.S.A.

Valcomm Technologies Inc.
4000 Ponce de Leon Blvd.,
Suite 470, Coral Gables,
FL 33146, U.S.A.
E-mail: us@valiantcom.com

U.K.

Valiant Communications (UK) Ltd
Central House Rear Office
124 High Street, Hampton Hill
Middlesex, TW12 1NS, U.K.
E-mail: gb@valiantcom.com

INDIA

Valiant Communications Limited
71/1, Shivaji Marg,
New Delhi - 110015,
India
E-mail: mail@valiantcom.com

